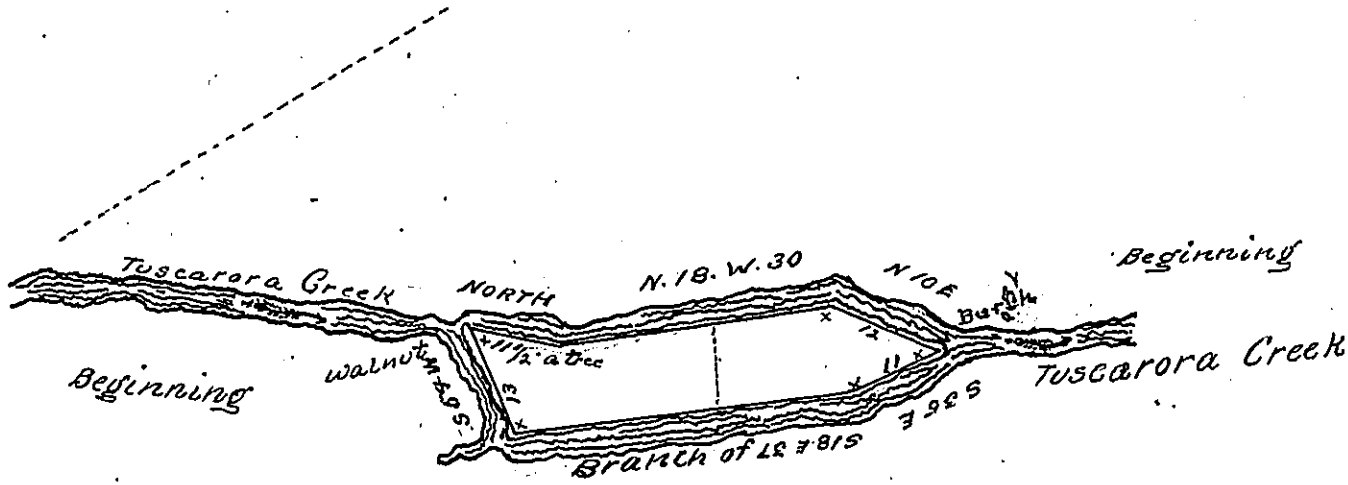


Wm Beal in Right  
of James Waddie



Mary Anderson

as ps  
2-60 & Allowance situate in Milford Township Mifflin County surveyed to  
Wm William Beale as follows, viz,

1-23 on his Warrant dated 12<sup>th</sup> March 1803

1-60 on his Warrant dated 13<sup>th</sup> February 1807

2-60 & Allowance

No Signature

IN TESTIMONY that the above is a copy of the original remaining on file in  
the Department of Internal Affairs of Pennsylvania, made  
conformably to an Act of Assembly approved the 16th day of  
February, 1833, I have hereunto set my Hand and caused  
the Seal of said Department to be affixed at Harrisburg,  
this Twenty Third day of November 1903

*Geo. P. Brown*  
Secretary of Internal Affairs.